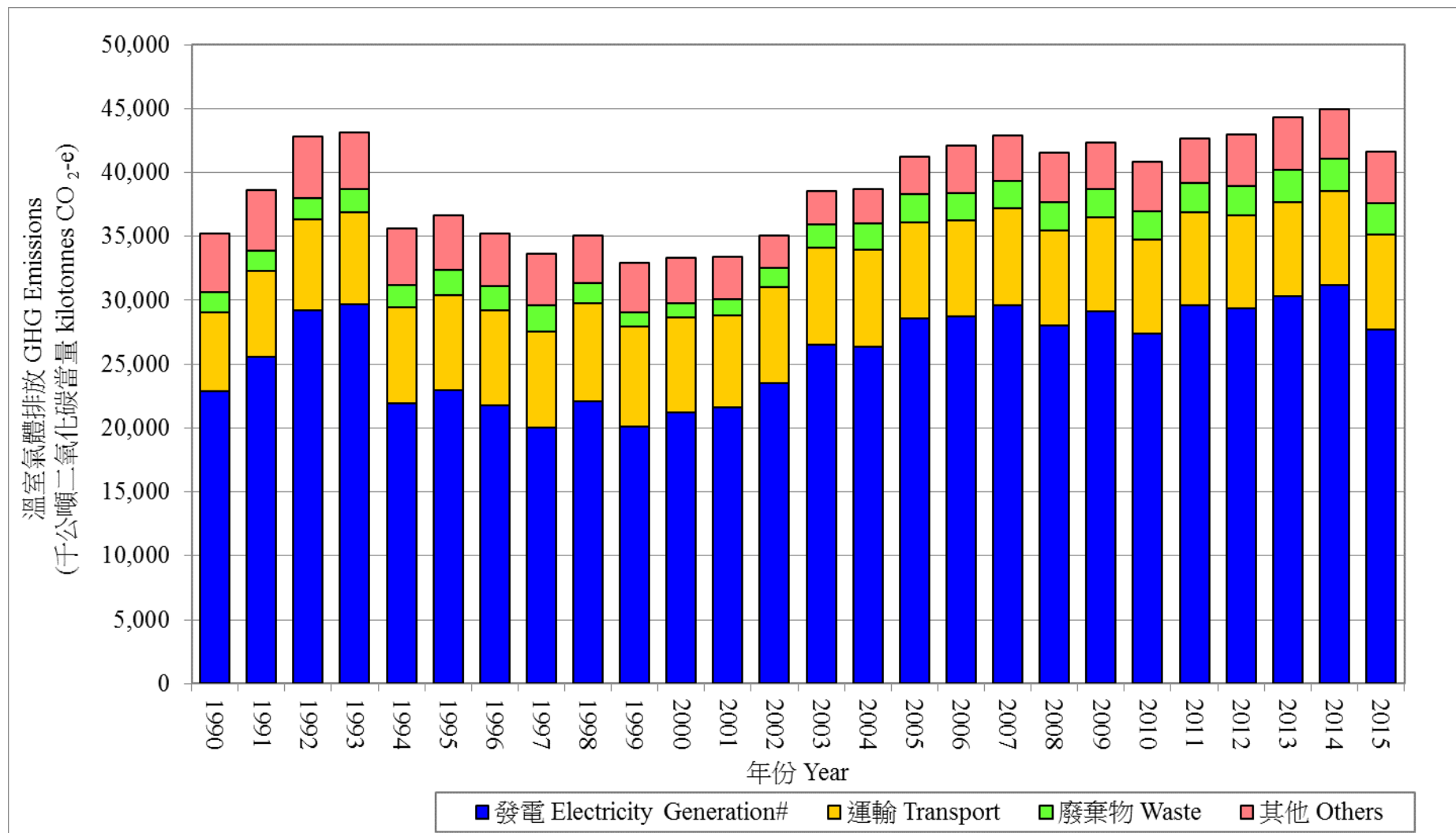


**1990年至2015年香港溫室氣體排放趨勢**  
**Greenhouse Gas Emission Trends of Hong Kong from 1990 – 2015**



備註 Remarks:

# 包括煤氣生產、佔香港總溫室氣體排放量約0.72%  
 Including GHG emissions arising from Towngas production which accounts for about 0.72% of total GHG emissions in Hong Kong.

更新日期 Updated: 2017/06